



Company Profile

Our Customers are people not Vehicles!



Our Approach

Our Fleet Management, Driver Safety, Vehicle Tracking Services and Solutions help our clients to:



Enhance Safety



- Identify and correct poor driving.
- Monitor drivers in relation to past performance.
- Implement targeted driver training.
- Develop customized driver safety policies.
- Keep their vehicles serviced and safe on the road.



Reduce their operation and fuel costs by 10% on average



Manage routes and delivery schedules



Improve vehicle utilization.



Track vehicles and drivers in real-time and assign jobs accordingly.



Identify, monitor and manage poor driver behavior.



Efficiently manage servicing and licensing, resulting in reduced wear and tear and increased vehicle uptime.



Lessen carbon emissions, helping to create a healthier, more sustainable environment.

About us

We are a dedicated team of professionals providing premium and Basic solutions for individual vehicle and fleets across numerous industries in terms of telematics

History

Started as a Fleet Management Business Unit of Kenya Grange Vehicle Industries Ltd in 2002 and incorporated in 2007.

Years of Operation

Over the last 14 years, we have provided fleet management and tracking solutions to a whole spectrum of clientele with operations within East Africa.

Sectors/Industries

Our solutions are applicable across many industries and market segments, including logistics, exploration, garbage collection, school Buses, Private/Public Transport sectors.

Clients

Customized solutions work for large and small fleets including passenger cars, light vehicles, buses, trucks, Prime movers and plant vehicles (e.g., materials handling and mining & construction).

People

A team of 40 plus growing to fully support tracking and fleet management of clients. We have a range of Certified technicians based in Kenya (Nairobi, Mombasa, Kisumu, Eldoret, and Nakuru).

Location

Controltech Limited's head office is in Nairobi's industrial area located at 14 Isiolo Road, off Enterprise road.

Branch Network

We have branches in Mombasa, Eldoret, Kisumu, Nakuru.

Our Clients

Controltech provides customized solutions to diverse client segments such as Banks, Public Service Vehicles, Schools, Oil Companies, Logistics, Clearing and Forwarding Companies, Manufacturers and Transport Companies.

We have over 100+ *clients* across [East Africa] with connections of 4500+ of trucks/fleets including camera and Artificial Intelligence tracking



We have experienced drastically reduced fleet operational and fuel costs

We have seen the reduction in impacts and accidents.

We appreciate the customers consistent service and professionalism and they are happy to recommend our products



Our Partners

Controltech partners are global leaders in Telematics Solutions who ensure high quality products and services delivered to our customers.



South African based company and a global leader in driver safety, vehicle tracking and fleet management solutions helping customers and fleet operators to effectively manage their mobile assets through Software as a Service delivery mode (SSSD).

Provide our clientele with superior GSM network coverage within Kenya and on a roaming capacity in various countries i.e., Uganda, Tanzania, South Sudan, DRC, North Sudan, Rwanda, Burkina Faso.

Team

Through our highly experienced core team below, we provides a quality customer centric service to all our clients.

**Raihaan Nurali: Managing Director
Over 11 years experience**

- Bachelor of Arts in Economics
- Over 11 years experience in management

Ali Taib: Sales Director

- Bachelor of Science
- Over 11 years experience in fleet management solutions

**Albanus Bilal Muthama: IT Director
Over 17 years experience**

- BCOM Degree Management Science, Advanced Diploma in Computer Science,
- Certifications in ERP & Systems Administration
- Several GPS & Fleet Management Certifications including best Mix telematics African Dealer
- Vast experience in East & Central Africa

**Vincent Mulwa: Technical Director
Over 16 years experience**

- BCOM Degree Management Science, System Administration
- Diploma in Hardware Maintenance and Repairs
- Certification in Motor Vehicle Electrical
- Certification in Operating systems
- Certification in Mix Telematics(Global Leader in Fleet Management)

**Patrick Maithya : Fleet Management
Technician**

Over 10 years experience

- Certification Trade Motor Vehicle Mechanics
- Electronics & Auto Electronics

**Emmanuel Ngaluma : Technical Support Advisor
Over 8 years experience**

- Certification in Auto Electronics & Motor Vehicle Mechanics
- Certification in Mix Telematics on Technical support, sales and customer service.

Solutions

Overview:

Controltech offers solution depending on client needs with our fleet management system .Our System allows you to have access and manage your vehicles anywhere from your Mobile application, Desktop or laptop to ensure efficiency, improve and reduce costs .

Solution:

- **Fleet management**
- **Fuel and driver management**
- **Tracking solution (Track3)**
- **Journey management**
- **Certification issuance**
- **Trailer Tracking**
- **Speed Governor**

Benefits

- Affordable and accessible to fleets of all types and sizes.
- It's a convenient choice for operators who wish to know exactly where their vehicles are and how they're being driven.
- Improves driver and vehicle security
- Drive down operating cost
- Live tracking and historical management reports



Fleet Fuel Management Solutions

Fuel & Driver Management Solutions

Overview:

Our fuel management solutions includes the following;

1. Fuel readings from the in-vehicle network (CanBUS)
2. Fuel Gauge existing in the vehicle
3. Fuel Probe Level Sensor

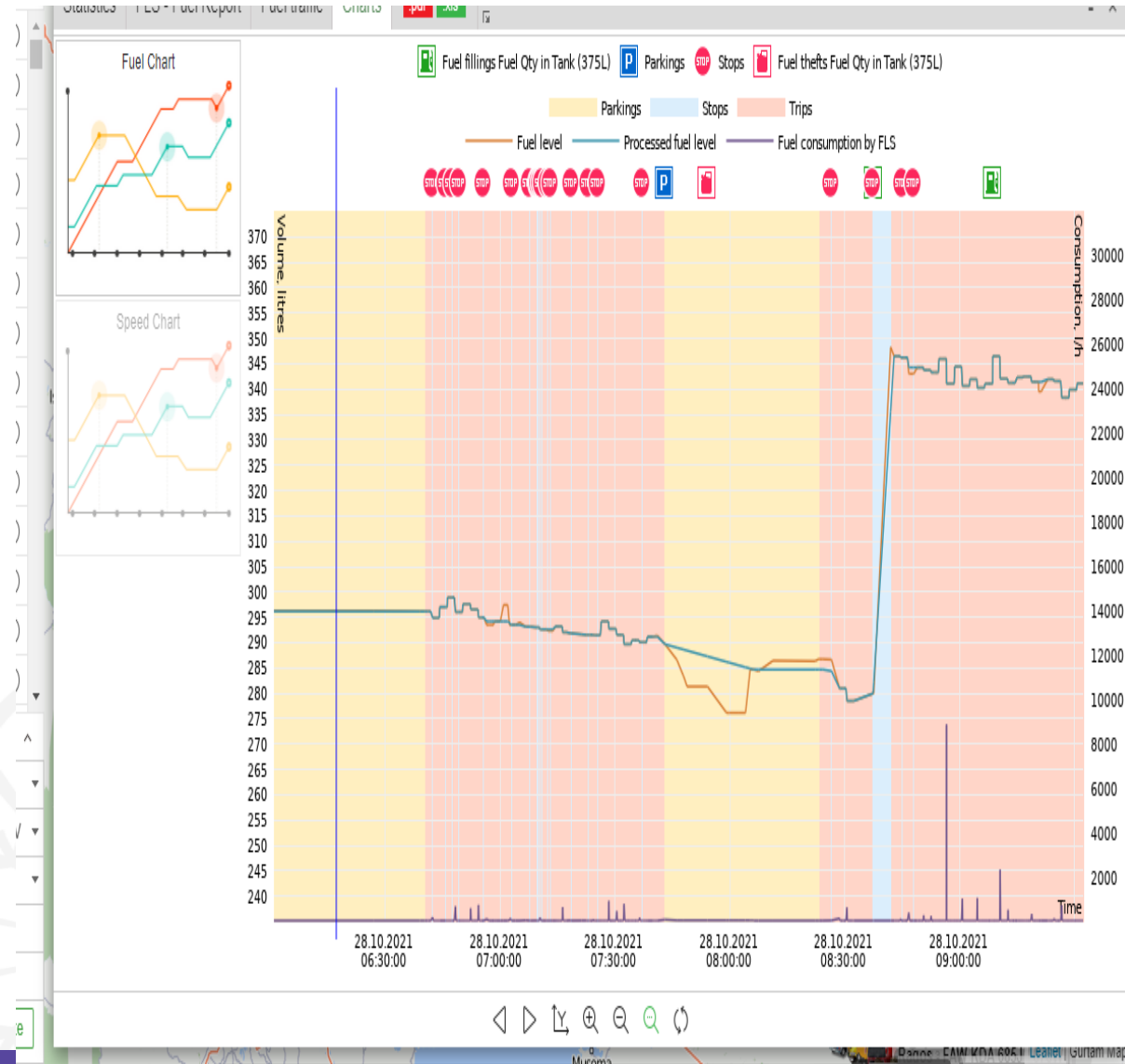
Features:

Fuel Usage

- i) manages driver behavior and reduce the five major contributors to high fuel usage.
 - Speeding
 - Free Wheeling
 - Harsh braking
 - Harsh acceleration
 - Harsh Cornering.....and More
- ii) Fuel reports
- iii) Using the Fuel Level Sensor, we can provide fuel level monitoring and fuel theft alerts(Fuel Theft)

Target Clients:

Large fleet owners & SMEs who desire to fully manage their fleet save cost on fuel consumption



MiX Telematics Solutions



Overview:

Our comprehensive fleet management solution, comprises of an in-vehicle on-board computer as well as easy to use web application interface.

Features:

A. Vehicle and Driver Management

- i. Trip Data Recording
- ii. Driving Violations
- iii. Customized Events- Driver door opening, Rear door opening, No-go zone entered, Hazard lights activated, Refrigerator temperature exceeded, Panic button pressed
- iv. Driver Identification
- v. Driver Scoring- Based on; Over speeding, Over revving, Harsh braking, Harsh acceleration , Out of green band driving , Excessive idle

B. Location Management

C. Tracking (Active & Passive)

D. Reports

E. Engine Monitoring

F. Fuel Management

G. Basic Route Planning

Target Clients:

Large fleet owners and SMEs who desire to fully manage their fleet at the comfort of their desks as it encompasses all the aspects of fleet management/asset financiers/insurance and automobile rentals

Tracking Solution



Target Clients:

- Single vehicle owners
- Asset Financed
- Insurance auto rentals
- Institutions
- Managers of small fleets

Overview:

This solution is an economical & full featured vehicle tracking product designed for easy and reliable installation in automobiles. **In-house Fleet management solution**

Features:

- Delivered via the internet and a mobile application- no additional software required.
- Superior GPS & cellular quality
- Low power sleep modes
- Over-the-air update capability for configuration and firmware updates
- Internal and external antenna configurations
- Immobilization ability
- Video Tracking Capability

Benefits:

- **Affordable and accessible to fleets of all types and sizes.**
- **It's the obvious and convenient choice for operators who want to know exactly where their vehicles are and how they're being driven.**



Journey Management Solutions



Journey Management Solution

Overview:

Journey Management comprises a wholly online process incorporating journey requests, journey approvals and journey monitoring

Features:

- i. Real-time notifications*
- ii. Fully integrated*
- iii. Journey requests and approvals*
- iv. Journey monitoring*
- v. Road hazard assessment*
- vi. Static compliance checks*
- vii. Robust reporting*

Target Clients:

suits fleet operators across diverse industries, and is especially ideal for those with large fleets of vehicles that travel long distances and carry passengers or cargo

Certificate Solutions

Overview:

Certificate Solutions

NTSA compliance certificates, issuance of speed governors and tracking certificates to ensure your business is transport regulation compliant with government transport regulation

Features:

a) Tracking certificates

- i. Tracking devices(MiX 4000 ,tracers)
- ii. Noting client company
- iii. Validity period

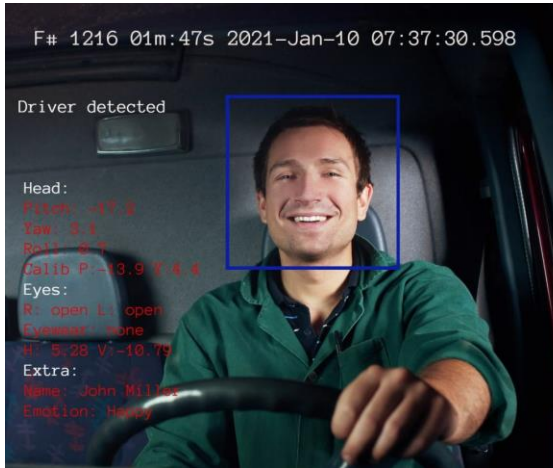
b) Speed governor compliance certificates

- i. Vehicle details & make
- ii. Speed governor type & model
- iii. Noting client company

Target Clients:

- Asset finance
- Insurance auto rentals
- Recovery of small vehicles
- Managers of small fleets

CT Video Telematics Solutions



Overview:

Video Tracking Solutions

We provide Video Telematics solutions to all range of industries with the ability of Artificial Intelligence (AI) tracking which comprises of Driver Management Systems (DMS) and Advanced Driver Assistance Capabilities (ADAS).

a) Video Triggered events

- i. Driver Distraction (Phone usage)
- ii. Lane Departure
- iii. Fatigue alerts
- iv. Forward Collision warning
- v. Impact detection and Reconstruction

b) Live Streaming

- i. Local Monitoring downloading of Videos
- ii. GPS tracking
- iii. Historical Video Reporting
- iv. Panic Button**
- v. Immobilizing**



Features:

Controltech Limited Branches

NAIROBI MAIN OFFICE

T: + 254 (0) 703 204 570/1

MOMBASA BRANCH

T: + 254 (0) 786 204 574

KISUMU SERVICE CENTRE

ELDORET SERVICE CENTRE

NAKURU SERVICE CENTRE

+254731990126/7

+254781320399/+254752711728/+254735219688

N/B: THESE CONTACTS ARE APPLICABLE TO ALL SERVICE CENTRES

CONTACT US via support@controltech-ea.com

CONTACT

**P.O. Box 17659 00500
14 Isiolo Road,
Off Enterprise Road, Industrial Area
Nairobi, Kenya
Tel: +254 703 240 570/1
+254 786 204 570/2
Email: info@controltech-ea.com
Website: www.controltech-ea.com
Facebook: Controltech Limited
Twitter: @controltech**